

up to  
**\$100k**  
in upgrades

Conditions apply.



## House & Land Price

**\$786,900\***

House Price: \$287,900\* | Land Price: \$499,000\*

House Size: 165.54m<sup>2</sup> | Land Size: 280m<sup>2</sup>

 3  2.5  1

## Lot 218

Road 3, Rouse Hill

**Expected Registration: Early 2020**

## Bonus Inclusions

Site costs\*

Floor coverings

Actron® ducted air conditioning

European designed 900mm cooktop & canopy rangehood

20mm Essentials Range Smartstone® Kitchen benchtops

Driveway

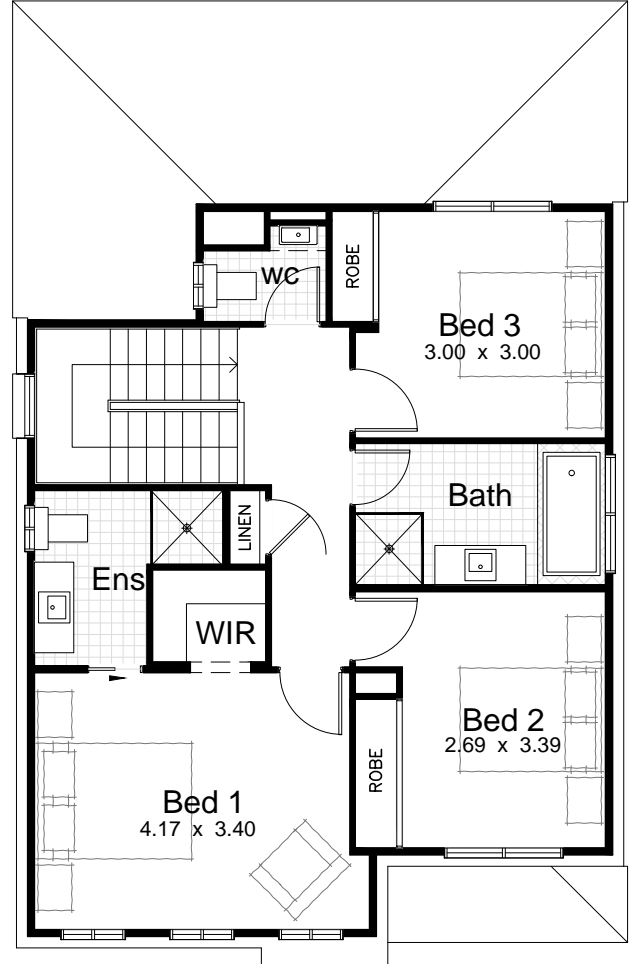
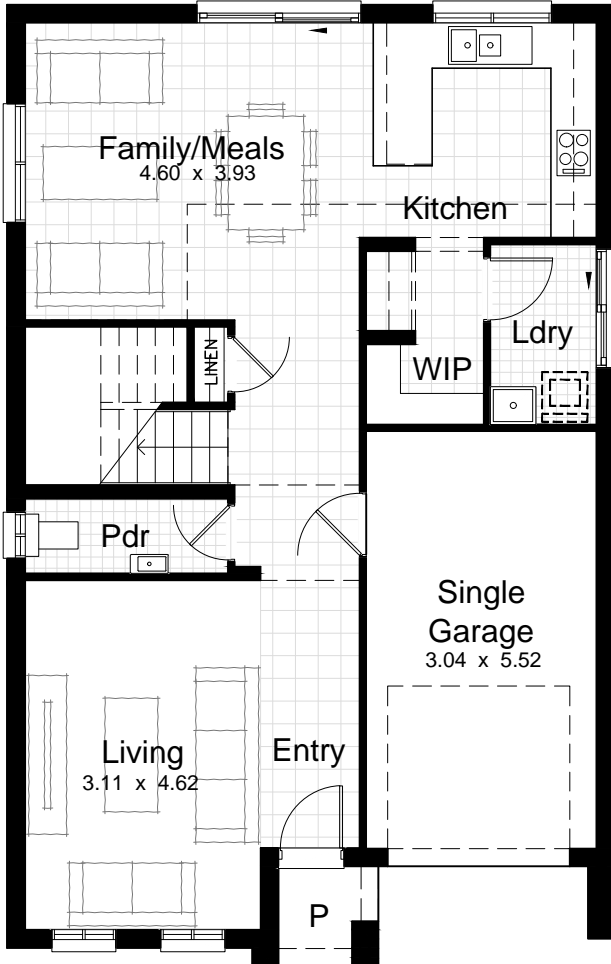
Steel OR T2 treated timber frame and trusses

24 month tender period guarantee

2600mm ceilings to the ground floor

Seima Paxi slimline freestanding bath

Security alarm system



© ALL RIGHTS RESERVED.  
Product Code: D062-047  
Revision Date: 03/04/2019

For a full list of inclusions and terms and conditions relating to the Made.Mega! promotion (up to \$100,000 worth of upgrades) visit [www.eldertonhomes.com.au/mademega](http://www.eldertonhomes.com.au/mademega).  
\*Site costs are based on developer provided contours and are subject to land registration and receipt of contour survey, geotech report, sewer peg out, 10.7 certificate and 88b instrument. Elderton Homes reserves the right to revise plans, specifications, facades and prices without notice or obligation. Contact White Square Properties, the selling agent for Elderton Homes for further details. Artist impression used for illustrative purposes only. Actual home colours, materials and finishes may vary. All facades are face brick only unless otherwise specified. All floorplans and sizes depict Elderton Homes Evoke façade. Price excludes electrical upgrades, tile upgrades, air conditioning upgrades and promotional offers. Elderton Homes ABN: 33138413902. Builders Licence: 218678C.