

up to
\$100k
in upgrades

Conditions apply.



House and Land Price

\$894,900*

House Price: \$378,860* | Land Price: \$516,040*

House Size: 188.16m² | Land Size: 266m²

 4  2.5  1

Lot 307

Proposed Road 3, Rouse Hill

Expected Registration: Aug 2020

Bonus Inclusions

Site costs*

36 month tender period guarantee

Landscaping*

Actron® ducted air conditioning

European designed 900mm cooktop & canopy rangehood

20mm Essentials Range Smartstone® Kitchen benchtops

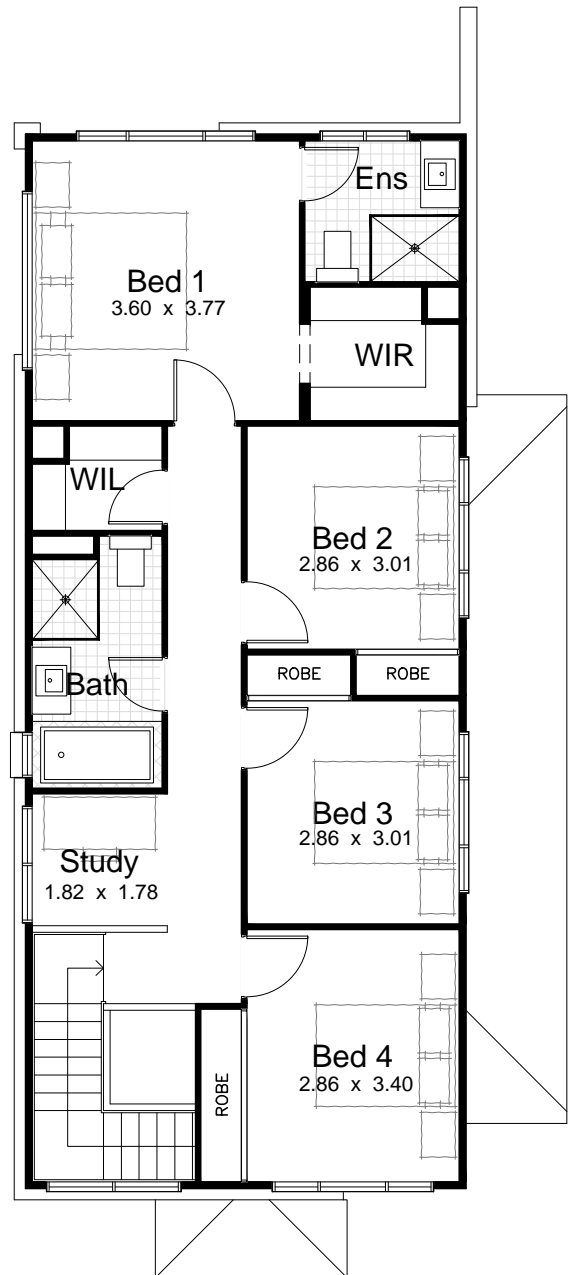
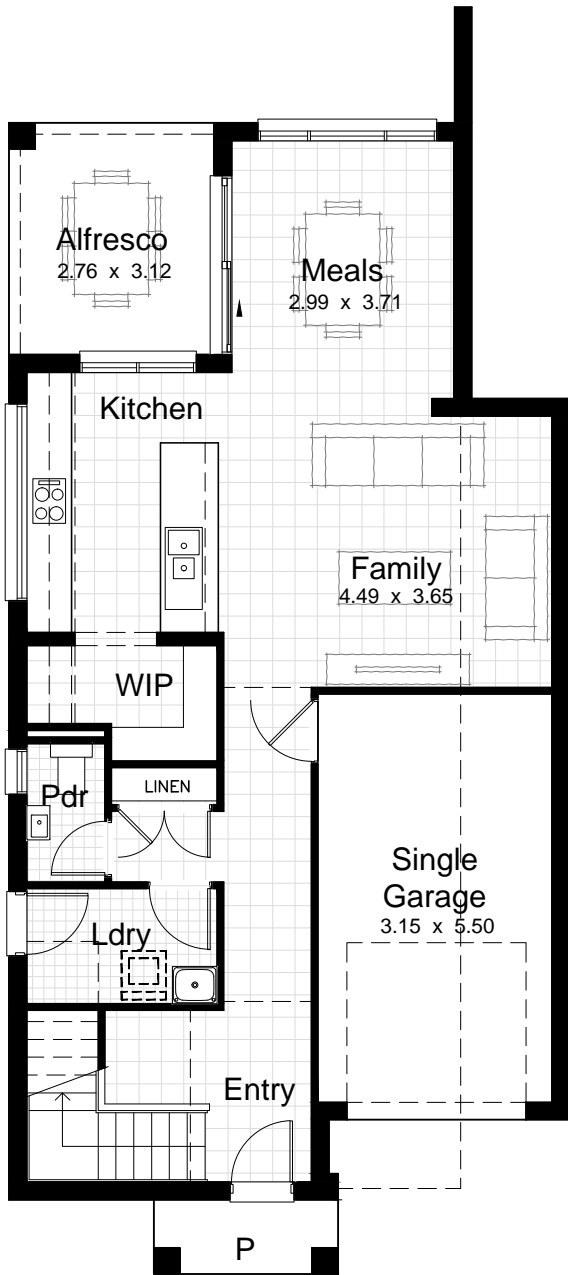
Steel OR T2 treated timber frame and trusses

2600mm ceilings to the ground floor

Seima Paxi slimline freestanding bath

Security alarm system

Plus more!



© ALL RIGHTS RESERVED.

Product Code: D046-012

Revision Date: 04/04/2019

For a full list of inclusions, terms and conditions relating to the Made.Mega! promotion (up to \$100,000 worth of upgrades) visit www.eldertonhomes.com.au/mademega. *Site Costs are based on developer provided contours and are subject to land registration and receipt of contour survey, geotech report, sewer peg out, 10.7 certificate and 88b instrument. *Landscaping includes turf, shrubs and masonry letterbox to the front. Pebbles, turf and colorbond fencing provided for the side and rear. Refer to your New Home Consultant for further details. Elderton Homes reserves the right to revise plans, specifications, facades and prices without notice or obligation. Artist impression used for illustrative purposes only. Actual home colours, materials and finishes may vary. All facades are face brick only unless otherwise specified. All floorplans and sizes depict Elderton Homes Evoke façade. Price excludes electrical upgrades, tile upgrades, air conditioning upgrades and promotional offers. Elderton Homes ABN: 33138413902. Builders Licence: 218678C.